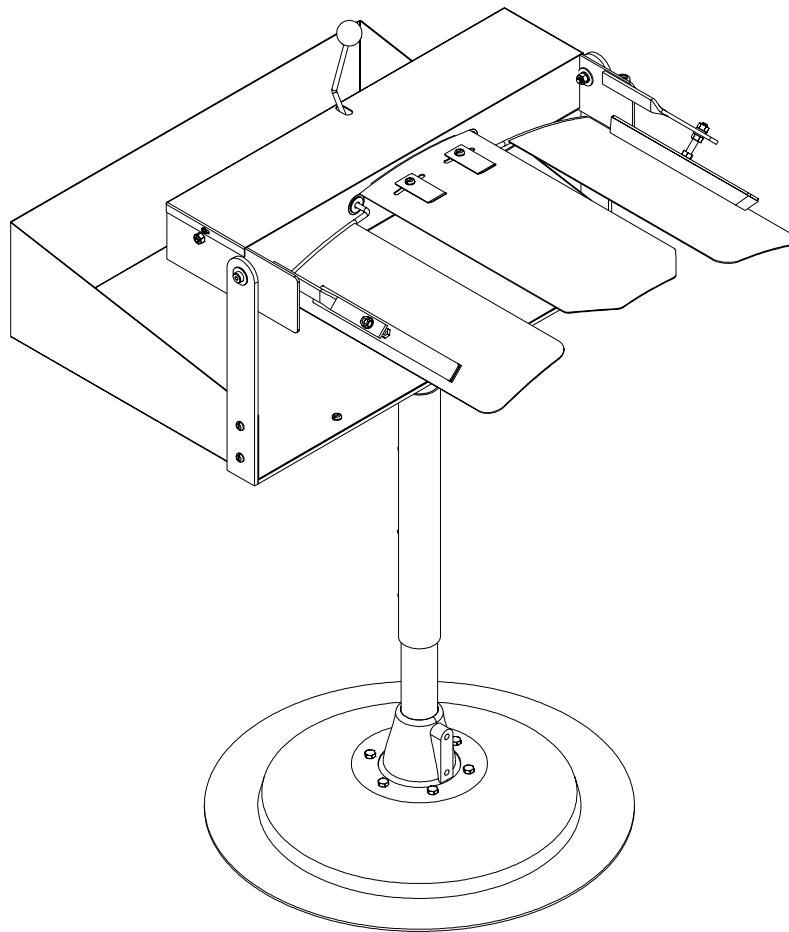




Manual Shirt Folder

CSF100

Owner's manual



US HEADQUARTERS
831 SOUTH FIRST ST.
P.O. BOX 32270
LOUISVILLE, KY. 40232-2270

PHONE: (502) 587-1292
FAX: (502) 585-3625

WARRANTY

Cissell Manufacturing Company (Cissell) warrants all new equipment (and the original parts thereof) to be free from defects in material or workmanship for a period of one (1) year from the date of sale thereof to an original purchaser for use, except as hereinafter provided. With respect to non-durable parts normally requiring replacement in less than one (1) year due to normal wear and tear, including but not limited to, cloth goods, valve discs, hoses and iron cords, and with respect to all new repair or replacement parts for Cissell equipment for which the one (1) year warranty period has expired or for all new repair or replacement parts for equipment other than Cissell equipment, the warranty period is limited to ninety (90) days from date of sale. The warranty period on each new replacement part furnished by Cissell in fulfillment of the warranty on new equipment or parts shall be for the unexpired portion of the original warranty period on the part replaced.

With respect to electric motors, coin meters and other accessories furnished with the new equipment, but not manufactured by Cissell, the warranty is limited to that provided by the respective manufacturer.

Cissell's total liability arising out of the manufacture and sale of new equipment and parts, whether under the warranty or caused by Cissell's negligence or otherwise, shall be limited to Cissell repairing or replacing, at its option, any defective equipment or part returned f.o.b. to Cissell's factory, transportation prepaid, within the applicable warranty period and found by Cissell to have been defective, and in no event shall Cissell be liable for damages of any kind, whether for any injury to persons or property or for any special or consequential damages. The liability of Cissell does not include furnishing (or paying for) any labor such as that required to service, remove or install; to diagnose troubles; to adjust, remove or replace defective equipment or a part; nor does it include any responsibility for transportation expense which is involved therein.

The warranty of Cissell is contingent upon installation and use of its equipment under normal operating conditions. The warranty is void on equipment or parts that have been subjected to misuse, accident or negligent damage; operated under loads, pressures, speeds, electrical connections, plumbing, or conditions other than those specified by Cissell; operated or repaired with other than genuine Cissell replacement parts; damaged by fire, flood, vandalism, or such other causes beyond the control of Cissell; altered or repaired in anyway that affects the reliability or detracts from its performance; or which have had the identification plate or serial number altered, effaced or removed.

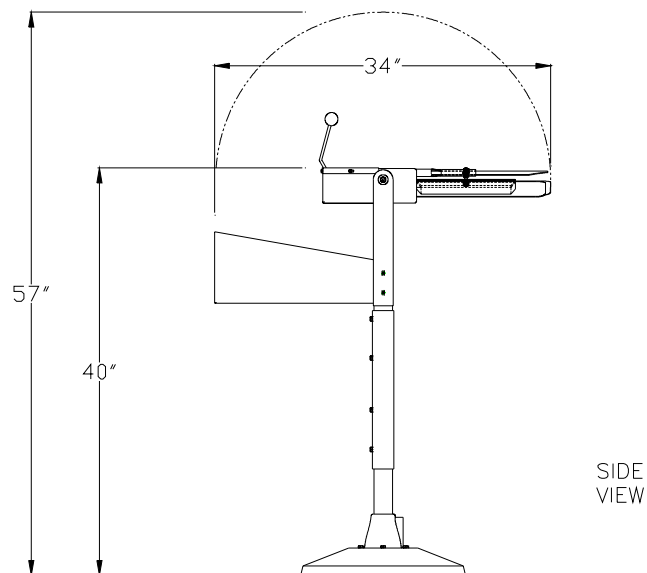
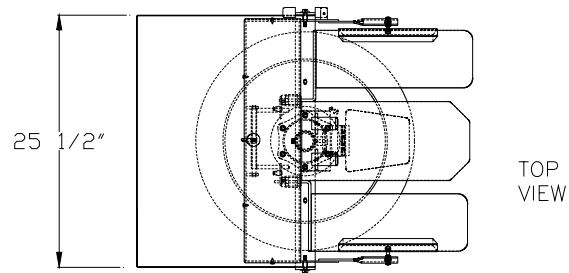
No defective equipment or part may be returned to Cissell for repair or replacement without prior written authorization from Cissell. Charges for unauthorized repairs will not be accepted or paid by Cissell.

CISSELL MAKES NO OTHER EXPRESSED OR IMPLIED WARRANTY, STATUTORY OR OTHERWISE, CONCERNING THE EQUIPMENT OR PARTS INCLUDING, WITHOUT LIMITATION, A WARRANTY OF FITNESS FOR A PARTICULAR PURPOSE, OR A WARRANTY OF MERCHANTABILITY. THE WARRANTIES GIVEN ABOVE ARE EXPRESSLY IN LIEU OF ALL OTHER WARRANTIES, EXPRESSED OR IMPLIED. CISSELL NEITHER ASSUMES NOR AUTHORIZES ANY PERSON TO ASSUME FOR IT ANY OTHER WARRANTY OR LIABILITY IN CONNECTION WITH THE MANUFACTURE, USE OR SALE OF ITS EQUIPMENT OR PARTS.

For warranty service, contact the Distributor from whom the Cissell equipment or part was purchased. If the Distributor cannot be reached, contact Cissell.

SPECIFICATIONS - MODEL "CSF100"

Width, Overall	27" (69 cm)
Depth, Overall	34" (87 cm)
Height, Overall	56" (143 cm)
Net Weight	77 lbs. (35 kg)
Domestic Shipping Weight (approx.)	87 lbs. (40 kg)



TESTING

The Cissell Manual Shirt Folders are manufactured and tested to the highest standards.

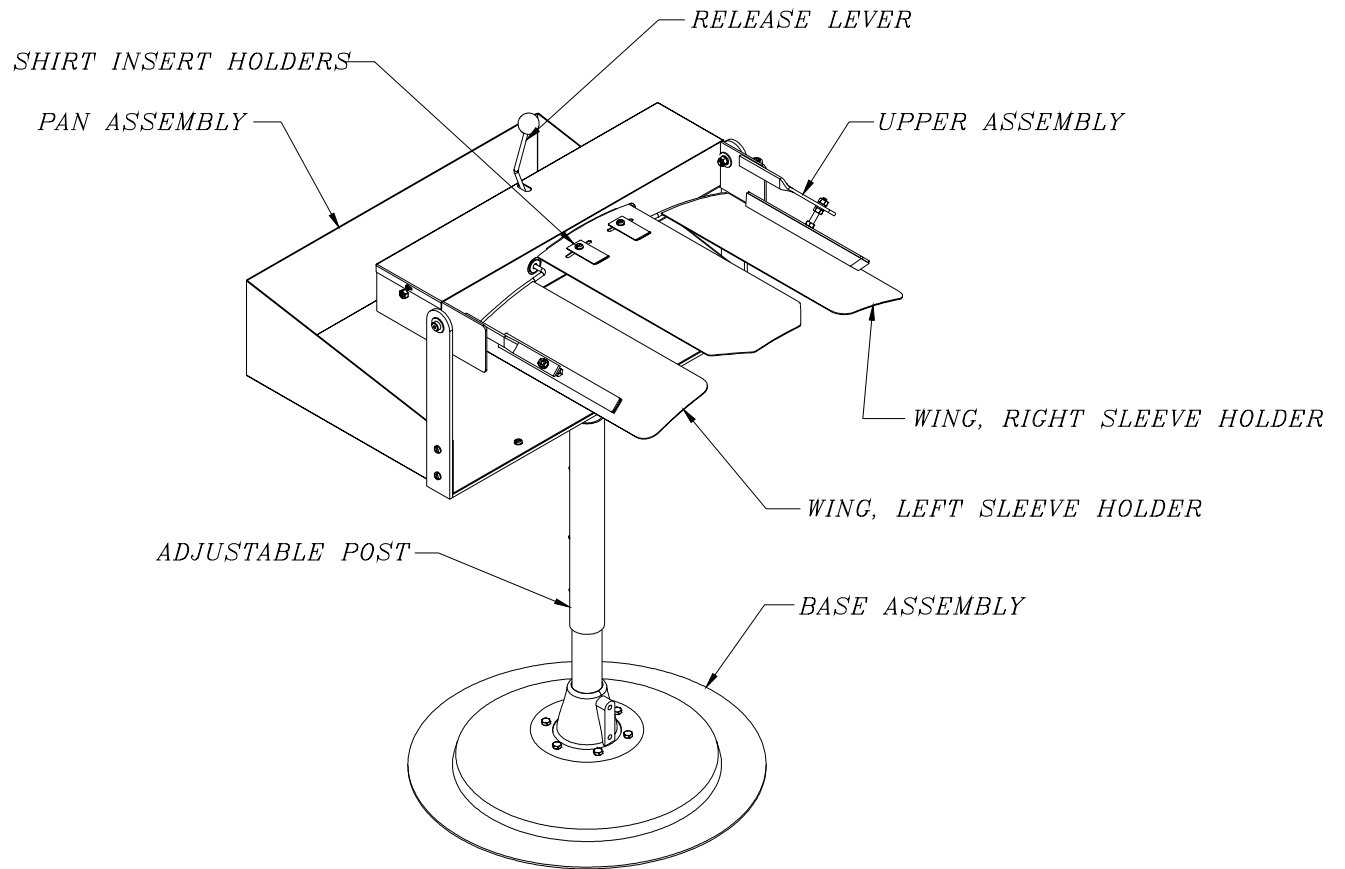
This Shirt Folder has been tested in the Cissell factory to determine that it is safe and in working order.

TABLE OF CONTENTS

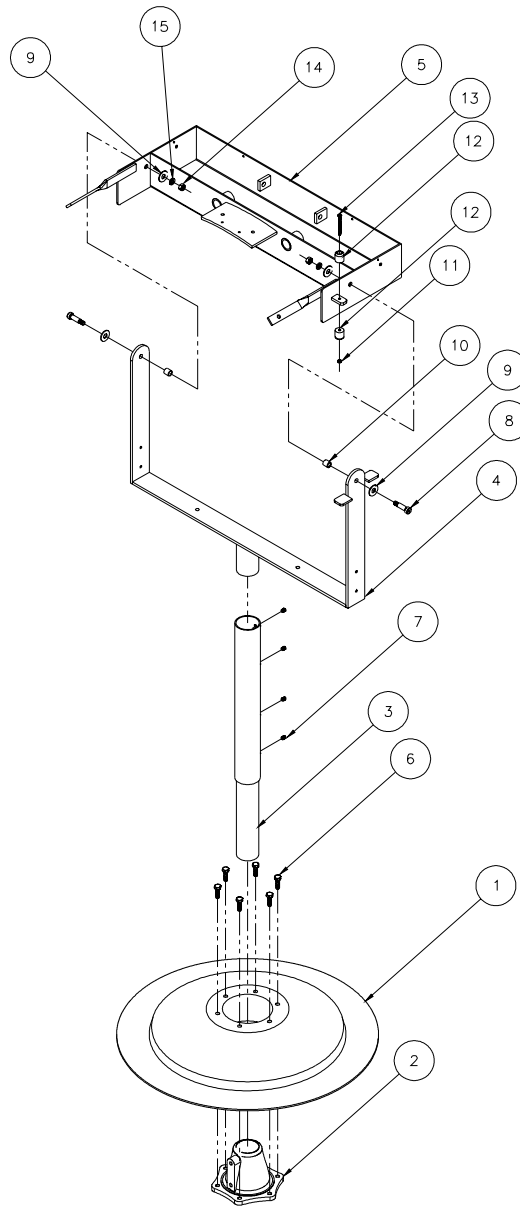
CSF100

	PAGE
<u>Warranty:</u>	2
<u>Specifications:</u>	3
<u>Testing:</u>	3
<u>Table of Contents:</u>	4
<u>Shirt Folder Assembly Part Numbers:</u>	
Main Assembly	5
Base Assembly	6
Upper Assembly	7

MAIN ASSEMBLY:



BASE ASSEMBLY:



<i>SYM.</i>	<i>PART NO.</i>	<i>DESCRIPTION</i>
1	C121	Base
2	C122	Hub
3	SFD141	Base Pipe and Collar
4	SFD140	Base Head Weldment
5	SFD100	Weldment, Head Unit
6	TU3246	Screw, 3/8-16 x 1"
7	TU3282	Set Screw
8	SFD106	Shoulder Bolt
9	IB140	Washer, Flat
10	SFD107	Spacer
11	TU3400	Nut
12	TU3549	Rubber Bumper
13	TU8694	Screw
14	SB-00906-0	Nut
15	TU2814	Lockwasher

UPPER ASSEMBLY:

WIRING SCHEMATIC:

AGC64 240V/60/1

LADDER DIAGRAM:

AGC65 240V/60/3

LADDER DIAGRAM:

AGC64 240V/60/1